

# FALCON ANCHORS™

## Advancing Anchoring with Falcon Anchors by Western Green

Falcon Anchors by Western Green take the best of existing anchor system technology and builds improved anchoring products that are a true **FORCE of NATURE**. Falcon Anchors feature improved quality, performance, and system installation, resulting in advanced anchored products that perform to the highest tested technologies.

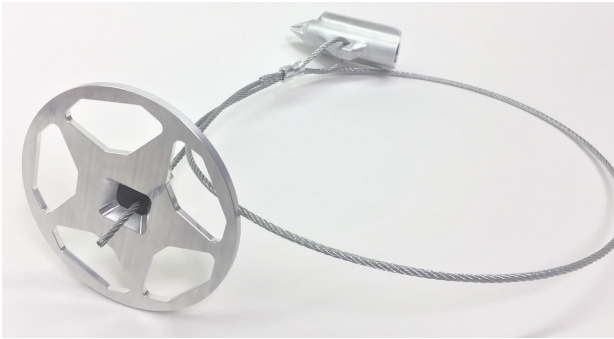
Falcon Anchors grip and dig into the soil for a streamlined installation and performance with high factor of safety.

Casted and assembled in the USA, and with quicker load-locking capabilities, Falcon Anchors can be in-place controlling against nature's forces from day one. When combined with one of Western Green's High-performance Turf Reinforcement Mats, the result is a completely integrated armoring system that can be curated to your specific design parameters.

Start specifying with our complete line of anchors, to reach your erosion and slope stabilization goals.



*The tapered nose of the Falcon anchor head are designed to penetrate the soil with a sharp driving edge without deflecting, resulting in improved installation.*



### INSTALLATION FEATURES OF THE FALCON ANCHORS

- Flush Back end allows anchors to be driven with no internal force, resulting in less breakage and easier driving
- All anchor sizes taper with the same aperture allowing the use of the same drive rod.
- Casted and manufactured in the USA, can be used on ARRA projects.
- Strengthened and centered anchor bridge result in quicker load-locking and less breakage at cable joint.



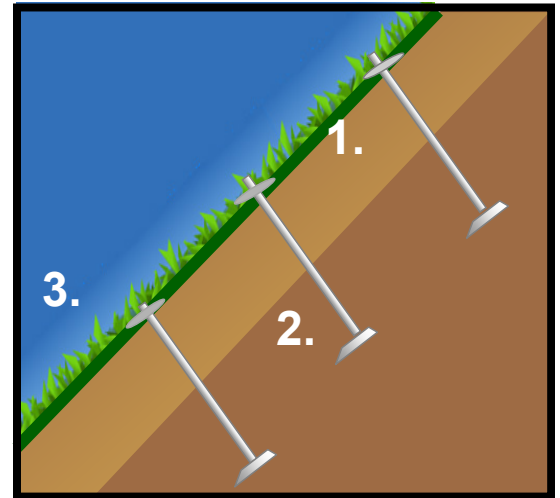
## Anchor Reinforced Vegetated System (ARVS) with Falcon Anchors

### HOW IT WORKS

**1. Western Green HPTRMs:** The soft armoring permanent erosion control product conforms to the earth's surface creating a soil-mat interaction that stabilizes the surface. The durability of the woven HPTRM provides confidence to install in high loading/ high surviveability applications.

**2. Falcon Percussion Driven Anchors (PDAs):** The PDAs are deep-seated anchors that are embedded under a potential failure plane, harnessing the strength of the fabric to hold saturated, surficial soils. The top cap allows tensioning to be applied to the cable tendon, creating a load bearing capacity of the system. With the cable bridge centered on the anchor head, the anchor has quicker load-locking, protecting more soil, with less loss of depth.

**3. Vegetation Reinforcement:** The open 3D structure of the HPTRM allows for rapid vegetation growth, with the roots integrating to create a stabilized surface strata. Together the full ARVS system is used to protect ground from erosion, and add stability to the soil base.

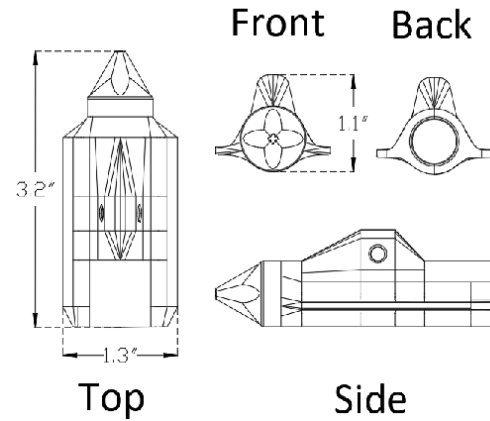
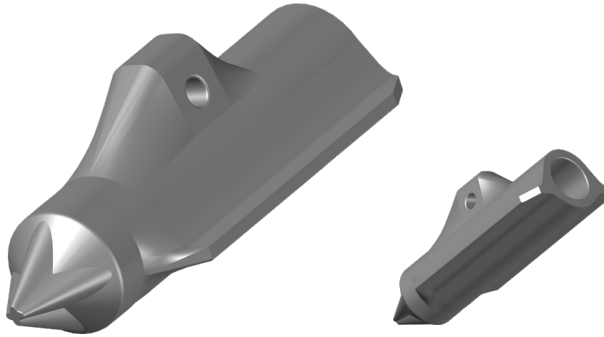


The HPTRM, percussion driven anchor, and vegetation combine to create the integrated ARVS. The components of the ARVS are available in custom configurations which can be designed to optimize performance and value to site-specific challenges.

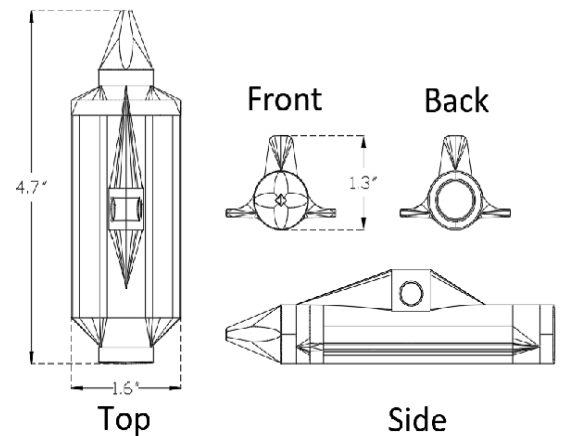
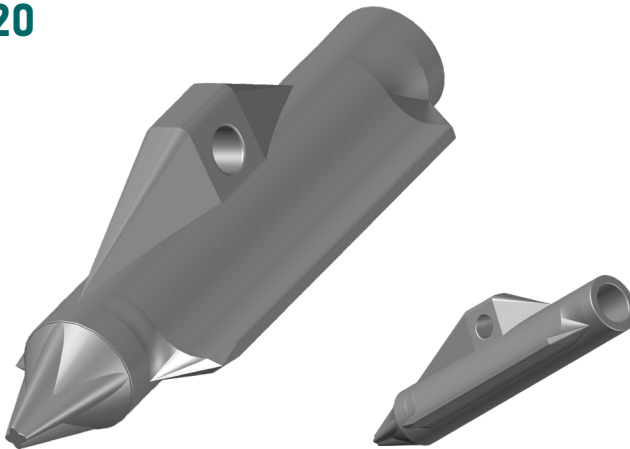
Assembly/Part	F80-Z	F80-X	F120-Z	FL120-Z6	FL170-Z6
Cap	4" Dia. Zinc Alloy	4" Dia. Zinc Alloy	4" Dia. Zinc Alloy	6" Dia. Zinc Alloy	6" Dia. Zinc Alloy
Grip	Spring-Loaded Ceramic Crush Roller	Spring-Loaded Ceramic Crush Roller	Spring-Loaded Ceramic Crush Roller	Spring-Loaded Ceramic Crush Roller	Spring-Loaded Ceramic Crush Roller
Cable	1/8" Dia. ZA Coated Steel, 3 ft	1/8" Dia. ZA Coated Extra Strong Steel, 3 ft	1/8" Dia. ZA Coated Steel, 3 ft	1/4" Dia ZA Coated Steel, 6 ft	1/4" Dia ZA Coated Steel, 6 ft
Anchor	Zinc Alloy 3.1" (80mm) x 1.30" (33mm)	Zinc Alloy 3.1" (80mm) x 1.30" (33mm)	Zinc Alloy 4.7" (120mm) x 1.57" (40mm)	Zinc Alloy 4.7" (120mm) x 1.57" (40mm)	Zinc Alloy 6.7" (170mm) x 2.17" (40mm)
Anchor Bearing Area	3.4 in <sup>2</sup> (2209 mm <sup>2</sup> )	3.4 in <sup>2</sup> (2209 mm <sup>2</sup> )	6.0 in <sup>2</sup> (3871 mm <sup>2</sup> )	6.0 in <sup>2</sup> (3871 mm <sup>2</sup> )	13.0 in <sup>2</sup> (8387 mm <sup>2</sup> )
Typ. Working Load	650 lbs	750 lbs	650 lbs	2,500 lbs	3,000 lbs
Max. Working Load	1,100 lbs	1,300 lbs	1,100 lbs	2,700 lbs	3,500 lbs
Ultimate Assembly Strength	1,300 lbs	1,500 lbs	1,300 lbs	3,000 lbs	3,800 lbs
Ultimate Cable Strength	1,700 lbs	2,000 lbs	1,700 lbs	7,000 lbs	7,000 lbs
Typical Use	Workhorse Assembly	High Strength Light Assembly	Soft Soil Workhorse Light Assembly	Hard Soil Heavy Assembly	Standard/Soft Soil Heavy Assembly

## Falcon Anchor Dimensions

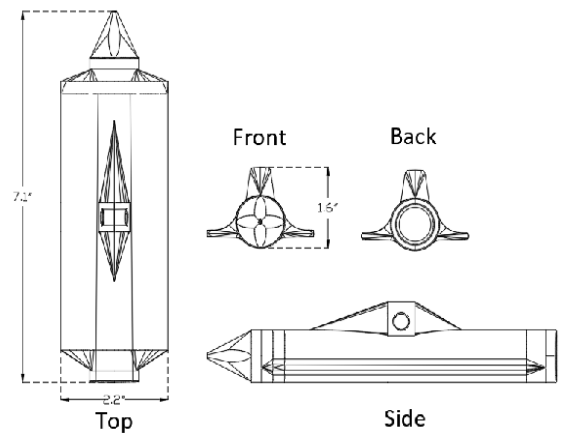
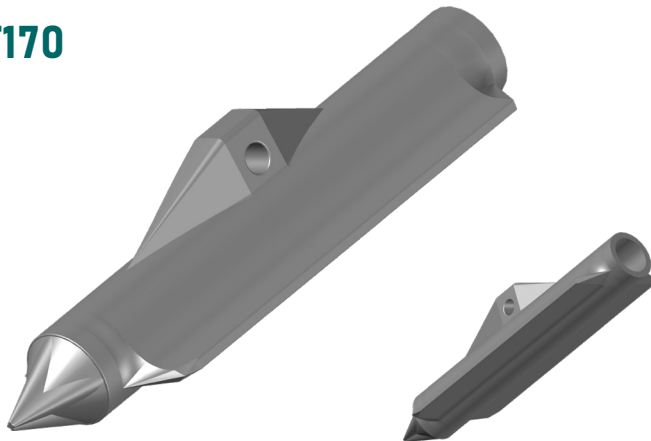
### F80



### F120



### F170



Disclaimer: The information contained herein may represent product index data, performance ratings, bench scale testing or other material utility quantifications. Each representation may have unique utility and limitations. Every effort has been made to ensure accuracy; however, no warranty is claimed and no liability shall be assumed by Western Green or its affiliates regarding the completeness, accuracy or fitness of these values for any particular application or interpretation. While testing methods are provided for reference, values shown may be derived from interpolation or adjustment to be representative of intended use. For further information, please feel free to contact Western Green.

©2021, Falcon Anchors is a registered trademark from Western Green. Certain products and/or applications described or illustrated herein are protected under one or more U.S. patents. Other U.S. patents are pending, and certain foreign patents and patent applications may also exist. Trademark rights also apply as indicated herein. Final determination of the suitability of any information or material for the use contemplated, and its manner of use, is the sole responsibility of the user. Printed in the U.S.A.