



Specification Sheet

VMax® SC250® Turf Reinforcement Mat

DESCRIPTION

The composite turf reinforcement mat (C-TRM) shall be a machine-produced mat of 70% straw and 30% coconut fiber matrix incorporated into permanent three-dimensional turf reinforcement matting. The matrix shall be evenly distributed across the entire width of the matting and stitch bonded between a heavy duty UV stabilized nettings with 0.50 x 0.50 inch (1.27 x 1.27 cm) openings, an ultra heavy UV stabilized, dramatically corrugated (crimped) intermediate netting with 0.5 x 0.5 inch (1.27 x 1.27 cm) openings, and covered by an heavy duty UV stabilized nettings with 0.50 x 0.50 inch (1.27 x 1.27 cm) openings. The middle corrugated netting shall form prominent closely spaced ridges across the entire width of the mat. The three nettings shall be stitched together on 1.50 inch (3.81cm) centers with UV stabilized polypropylene thread to form permanent three-dimensional turf reinforcement matting. All mats shall be manufactured with a colored thread stitched along both outer edges as an overlap guide for adjacent mats.

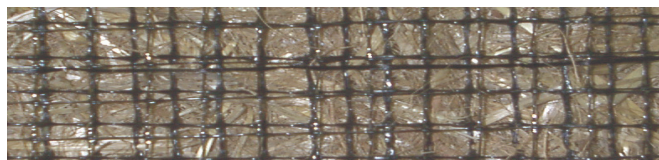
The SC250 shall meet Type 5A, 5B, and 5C specification requirements established by the Erosion Control Technology Council (ECTC) and Federal Highway Administration's (FHWA) FP-03 Section 713.18

Material Content

Matrix	70% Straw Fiber	0.35 lb/sq yd (0.19 kg/sm)
	30% Coconut Fiber	0.15 lbs/sq yd (0.08 kg/sm)
Netting	Top and Bottom, UV-Stabilized Polypropylene	5 lb/1000 sq ft (2.44 kg/100 sm)
	Middle, Corrugated UV-Stabilized Polypropylene	24 lb/1000 sf (11.7 kg/100 sm)
Thread	Polypropylene, UV Stable	

Standard Roll Sizes

Width	6.5 ft (2.0 m)	8 ft (2.44m)
Length	55.5 ft (16.9 m)	90 ft (27.4 m)
Weight ± 10%	34 lbs (15.42 kg)	70 lbs (31.8 kg)
Area	40 sq yd (33.4 sm)	80 sq. yd. (66.8 sm)



Index Property	Test Method	Typical
Thickness	ASTM D6525	0.62 in. (15.75 mm)
Resiliency	ASTM 6524	95.2%
Density	ASTM D792	0.891 g/cm ³
Mass/Unit Area	ASTM 6566	16.13 oz/sy (548 g/sm)
UV Stability	ASTM D4355/ 1000 HR	100%
Porosity	ECTC Guidelines	99%
Stiffness	ASTM D1388	222.65 oz-in.
Light Penetration	ASTM D6567	4.1%
Tensile Strength - MD	ASTM D6818	709 lbs/ft (10.51 kN/m)
Elongation - MD	ASTM D6818	23.9%
Tensile Strength - TD	ASTM D6818	712 lbs/ft (10.56 kN/m)
Elongation - TD	ASTM D6818	36.9%
Biomass Improvement	ASTM D7322	441%

Design Permissible Shear Stress

	Short Duration	Long Duration
Phase 1: Unvegetated	3.0 psf (144 Pa)	2.5 psf (120 Pa)
Phase 2: Partially Veg.	8.0 psf (383 Pa)	8.0 psf (383 Pa)
Phase 3: Fully Veg.	10.0 psf (480 Pa)	8.0 psf (383 Pa)
Unvegetated Velocity	9.5 fps (2.9 m/s)	
Vegetated Velocity	15 fps (4.6 m/s)	

Slope Design Data: C Factors

Slope Length (L)	Slope Gradients (S)		
	≤ 3:1	3:1 – 2:1	≥ 2:1
≤ 20 ft (6 m)	0.0010	0.0209	0.0507
20-50 ft	0.0081	0.0266	0.0574
≥ 50 ft (15.2 m)	0.0455	0.0555	0.081

Roughness Coefficients – Unveg.

Flow Depth	Manning's n
≤ 0.50 ft (0.15 m)	0.040
0.50 – 2.0 ft	0.040-0.012
≥ 2.0 ft (0.60 m)	0.011



Western Green
4609 E. Boonville-New Harmony Rd.
Evansville, IN 47725

nagreen.com
800-772-2040

©2019, North American Green is a registered trademark from Western Green. Certain products and/or applications described or illustrated herein are protected under one or more U.S. patents. Other U.S. patents are pending, and certain foreign patents and patent applications may also exist. Trademark rights also apply as indicated herein. Final determination of the suitability of any information or material for the use contemplated, and its manner of use, is the sole responsibility of the user. Printed in the U.S.A.