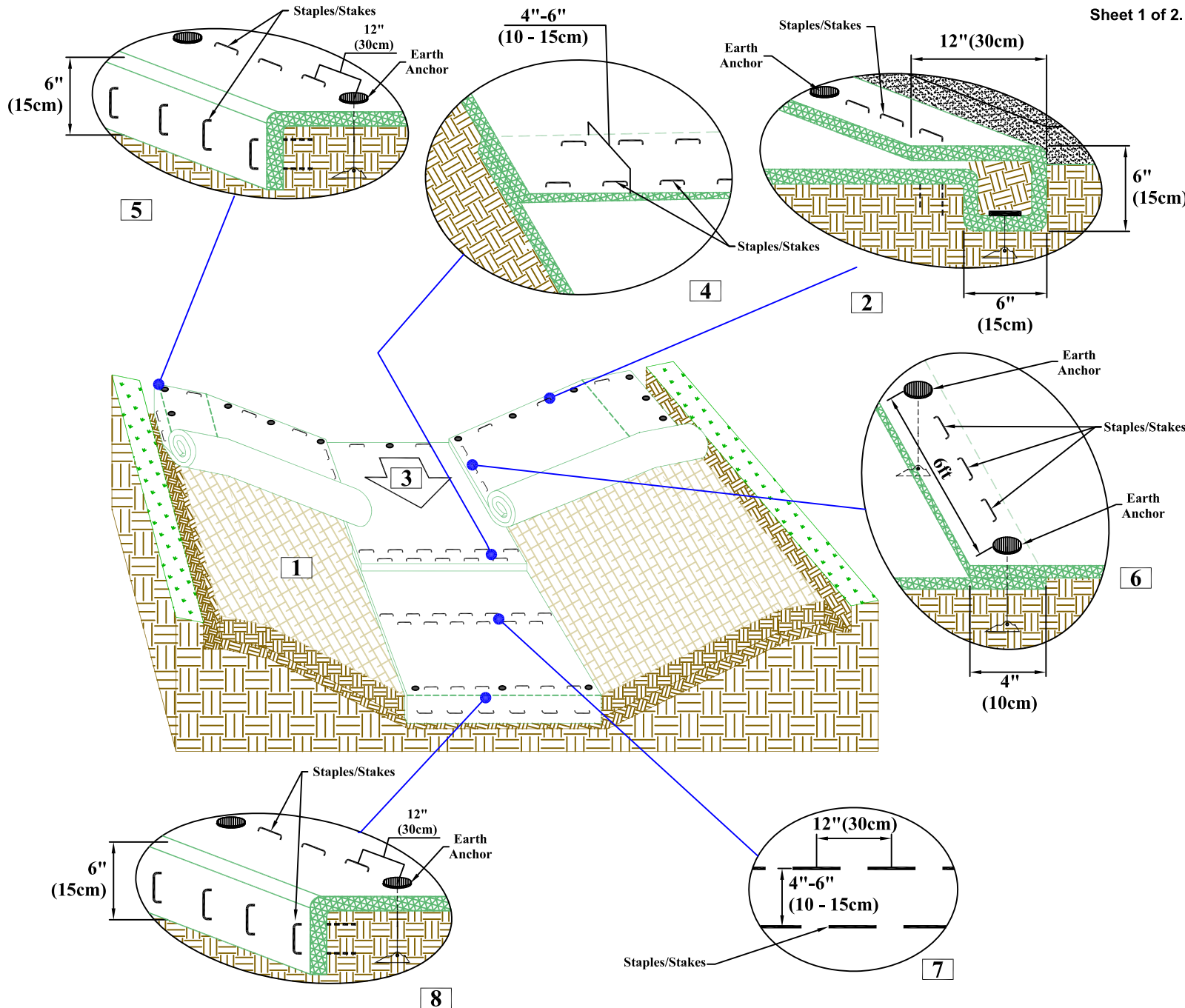


CHANNEL INSTALLATION DETAIL TURF/EARTH REINFORCED MAT SYSTEM (TERMS)



- General Installation
1. Prepare soil before installing the High-Performance Turf Reinforcement Mat (HPTRM), including any necessary application of soil amendments such as lime or fertilizer. See Seeding and Vegetating section for details regarding preseeding, overseeding, or use with sod.
 2. Begin at the top of the channel by anchoring the HPTRM in a 6" (15 cm) deep x 6" (15 cm) wide trench with approximately 12" (30 cm) of HPTRM extended beyond the up-slope portion of the trench. Anchor the HPTRM with a row of anchors/staples/stakes approximately 12" (30 cm) apart in the bottom of the trench. Backfill and compact the trench after stapling. Compact soil and fold remaining 12" (30cm) portion of HPTRM back over compacted soil. Secure HPTRM over soil with a row of anchors/staples/stakes spaced approximately 12" (30 cm) across the width of the HPTRM.
 3. Roll center HPTRM in direction of water flow in bottom of channel. HPTRMs will unroll with appropriate side against the soil surface. All HPTRMs must be securely fastened to soil surface by placing anchors/staples/stakes in appropriate locations as shown in the anchoring detail.
 4. Place consecutive HPTRMs end over end (shingle style) with a 4" - 6" (10 cm - 15 cm) overlap. Use a double row of staples/stakes staggered 12" (30 cm) apart and 12" (30 cm) on center to secure HPTRMs.
 5. Full length edge of HPTRMs at top of side slopes must be anchored with a row of staples/stakes approximately 12" (30 cm) apart in a 6" (15 cm) deep x 6" (15 cm) wide trench. Backfill and compact the trench after stapling.
 6. Adjacent HPTRMs must be overlapped approximately 4" (10 cm) and fastened.
 7. In high flow channel applications, a staple/stake check slot is recommended at 30 to 40 foot (9 m - 12 m) intervals. Use a double row of staples/stakes staggered 4" (10 cm) apart and 12" (30cm) on center over entire width of the channel.
 8. The terminal end of the HPTRMs must be anchored with a row of staples/stakes approximately 12" (30 cm) apart in a 6" (15 cm) deep x 6" (15 cm) wide trench. Backfill and compact the trench after stapling.

Drawing Not To Scale

Disclaimer:
 The information presented herein is general design information only. For specific applications, consult an independent professional for further design guidance.